

Get Started Guide

Content

1. [Homepage](#)
2. [Analysis Page](#)
3. [Interaction With a Visualization](#)
 1. [Mouse Hover](#)
 2. [Mouse Click](#)
4. [See Direct Definition](#)
5. [Visualize multiple traits together](#)
6. [Select Characters](#)

Homepage

Portrayal is a tool for visualizing different character traits identified by natural language processing (e.g., emotions, actions). At its core, it is a tool for analyzing literary works.

To use the tool, please visit <https://character-traits.herokuapp.com/home>. When you load the webpage for the first time, it will take a few seconds to reboot. Please wait patiently. You will see a list, like the one on the right in the page. The list shows stories preloaded in the tool.

At this moment, we have four preloaded stories:

1. Persuasion by Jane Austen, [Wikipedia](#), Sample Question to fill out (link removed).
2. The Yellow Wallpaper by Charlotte Perkins Gilman, [Wikipedia](#), sample questions to fill out
3. Alice in Wonderland by Lewis Carroll, [Wikipedia](#), sample questions to fill out
4. The Quest of the Silver Fleece by W. E. B. Du Bois, [Amazon Book](#), sample questions to fill out.

Sample Projects

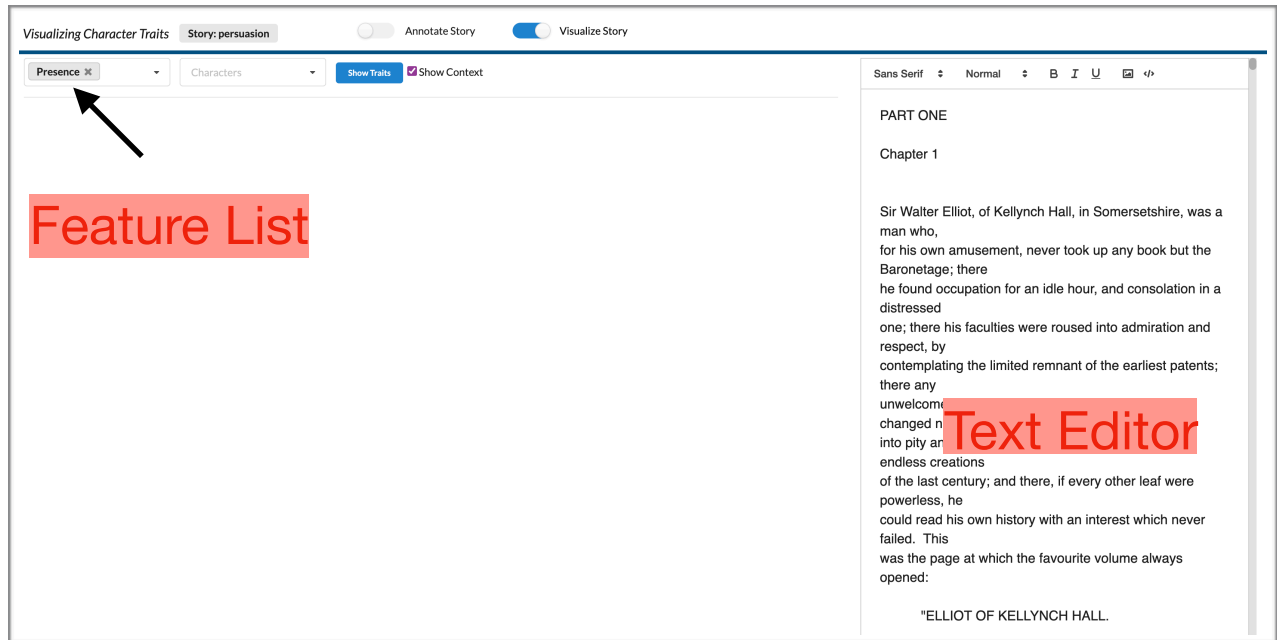
[alice_in_wonderland](#)

[persuasion](#)

[the_quest_of_the_silver_fleece](#)

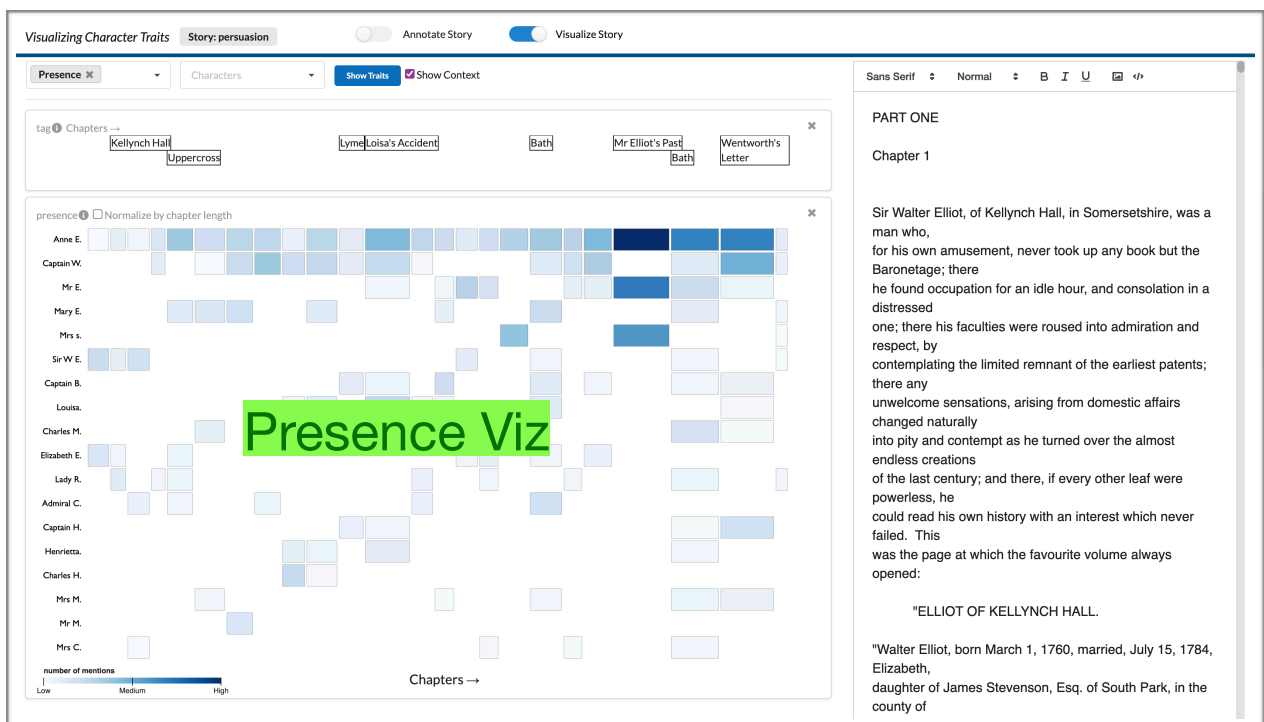
[the_yellow_wallpaper](#)

Let's click on Persuasion from the list and see what happens.



Analysis Page

On loading the analysis page, you will see an interface like the figure above. On the right-hand side, there is a **text editor** where you can read the story (Persuasion in the example). On the left side, there are two dropdown. Let's look at the first one, named **Features**. The dropdown defaults to the option **Presence**. Let's click on the **Show Traits** button.



You will see a figure like above. In the middle there is a matrix like **visualization**. This visualization shows the number of mentions for each character in the story. Each tile shows the number of mentions for a character in a chapter. The brighter the color, the higher the presence of the character in that chapter.

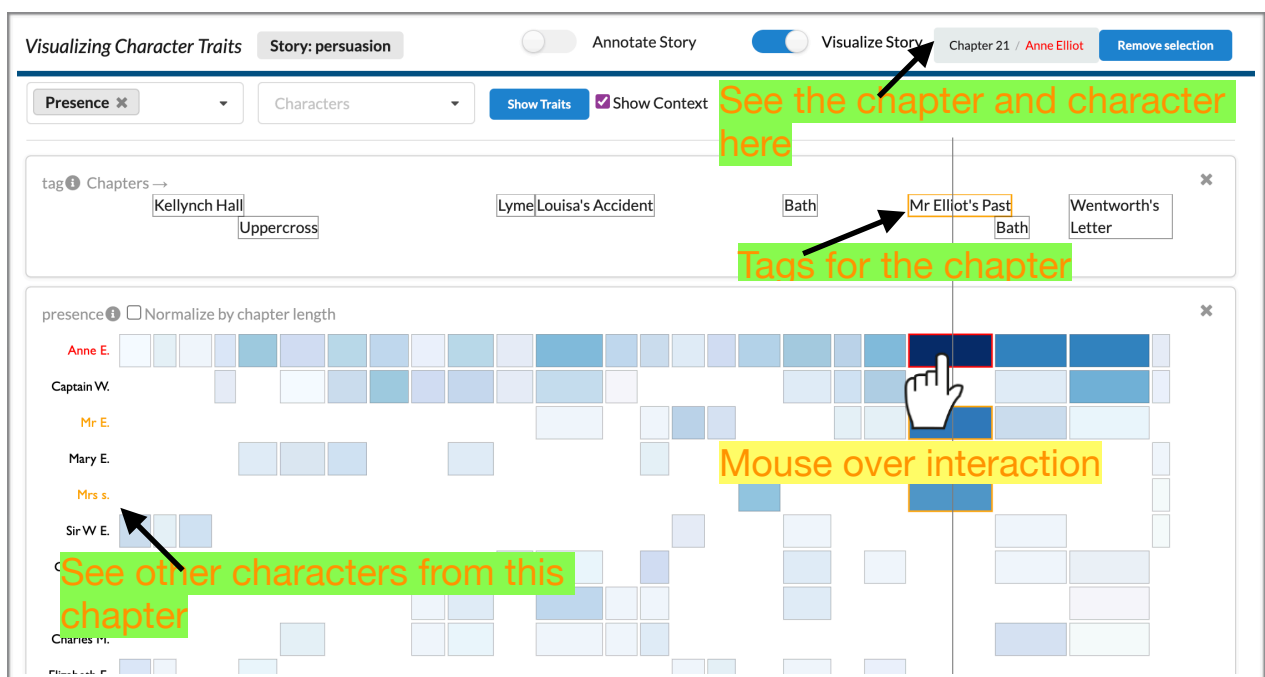
The characters are shown on the left hand side. The length of a tile shows how long a chapter is. A few insights are apparent from the visualization:

1. Anne Elliot (the top row), the lead character, is present throughout the story.
2. In the first chapter (left most column), there's three significant characters: Anne Elliot, Sir Walter Elliot, and Elizabeth Elliot.

Interaction With a Visualization

Mouse Hover

Let's see what more insights we can gather from this visualization. Try taking your mouse over a tile. I have taken my mouse over a **tile on the top row**.



The corresponding chapter (Chapter 21) and character (Anne Elliot) is shown on the **top of the visualization**. At the same time, all characters from this chapter is

highlighted on left side, so are the tags that show contextual information about the chapter.

Mouse Click

We have seen mouse hover interaction. Let's now click on a tile (Chapter 21). The visualization updates with some animation! The new tiles now represent sentences of the selected chapter (Chapter 21).



You can interact with these tiles the same way we did earlier. For example, let's take the mouse over a tile in this view. On hover, the corresponding text is highlighted with bold text as well as the character (Anne Elliot in this case) that we hovered over on (figure below).

you take your mouse over a character name, you will see corresponding adjectives used for that character. For example, the figure below shows adjectives for the character Mr. Elliot. It's that simple!

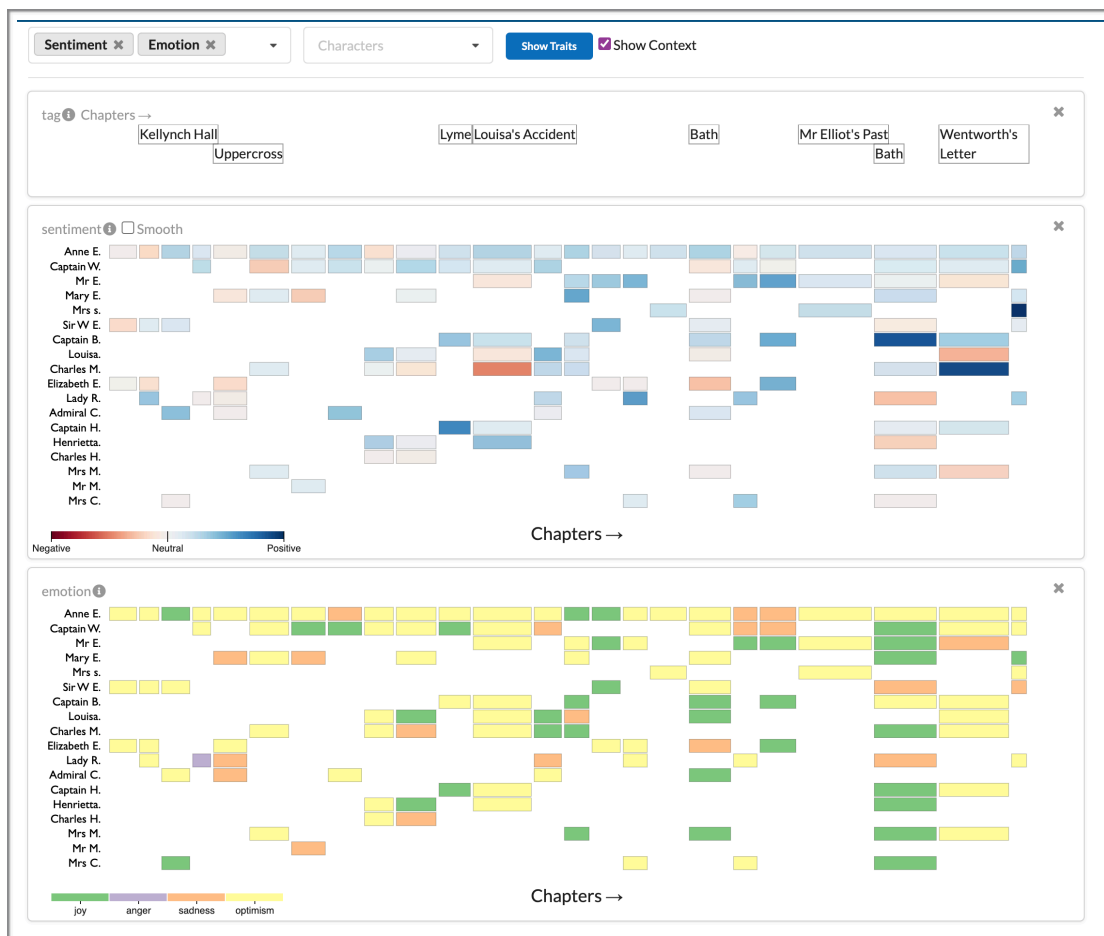
One more thing you can do is to take your mouse over a word. The word will be highlighted in the text. For example, I have highlighted the word “Cheap” in the text.



man he had not the smallest value for it. **His chance for the Kellynch estate was something, but all the honour of the family he held as cheap as dirt.** I have often heard him declare, that if baronetcies were

Visualize Multiple Features Together

Okay, now we have come to the fun part. Up to this point, we have seen one character trait at a time. But, you can choose multiple together. For example, let's select “Sentiment” and “Emotion” from the “Feature” dropdown.

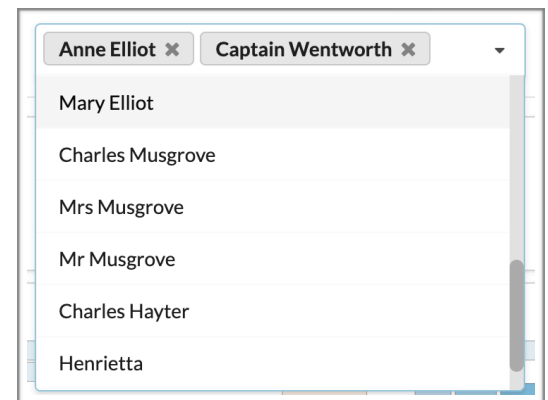


You will see two visualizations like above. If you look closely, they are the same visualizations as the “Presence” visualization we saw at first. However, they now encode average sentiments and dominant emotions for characters in each chapter. We can use same mouse interaction (hover and click) with these visualizations.

Select Characters

Now, you may not be interested in all the characters of a story. You can select characters of interest by using “Characters” dropdown (on the right).

And the visualization will be updated accordingly once we click on the “Show Traits” button again.



There's a lot more to explore in the tool. I hope you enjoy it as much as we enjoyed building it!